



**UNLEASH YOUR POWER
WITH SKID STEER LOADERS**



COBRA EQUIPMENTS

COBRA RYD 850

**Gets The Job Done
Faster & Smarter, The
Ultimate Heavy-duty
Workhorse!**



**EASILY OPERABLE AS
NO GEARBOX & CLUTCH**



FULLY HYDRAULIC



**VERSATILE &
MULTI-TASKING**



**360° ROTATION &
COMPACT SIZE**



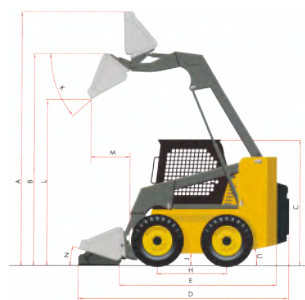
**MINIMUM
MAINTENANCE**

www.cobraequipments.com

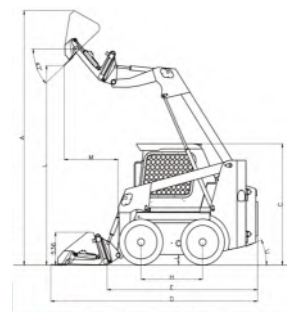
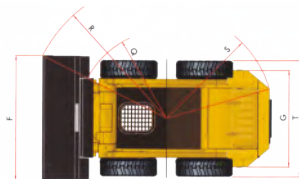
COBRA RYD 850 SPECIFICATIONS

Dimensions			COBRA RYD 850	COBRA RYD 850 (with extension bucket)
Overall Operating Height (to top to bucket)	A	mm	3870	4131
Overall Operating Height (to hinge pin)	B	mm	2970	2970
Overall Height	C	mm	2025	2025
Overall Length (with bucket)	D	mm	3270	3519
Overall Length (Without bucket)	E	mm	2560	2560
Overall Width	F	mm	1690	1690
Tread Width (or track gauge)	G	mm	1330	1330
Wheel Base (or length of track on ground)	H	mm	1045	1045
Ground Clearance	J	mm	174	174
Dump Angle	K	degree	42	42
Dump Height	L	mm	2236	3274
Dump Reach	M	mm	608	917
Rollback at Ground	N	degree	23	23
Turn Circle Front (without bucket)	Q	mm	1234	1234
Turn Circle Front (with bucket)	R	mm	1958	1958
Turn Circle Rear	S	mm	1490	1490
Overall Width (without bucket)	T	mm	1603	1603
Departure Angle	U	degree	24	24
Tyre (4 Wheel)			10 x 16.5 - 10PR	10 x 16.5 - 10PR
Performance				
Engine			Hyundai/Cummins	Hyundai/Cummins
Rated Operating Capacity	kg		850	730
Tipping Load	kg		1680	1680
Operating Weight	kg		2680	2680
Travel Speed	km/h		11.0	11.0
Bucket Capacity (heaped capacity)			0.5m ³	0.5m ³

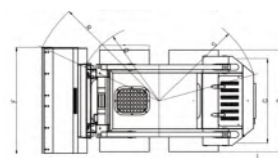
Note: We reserve the right of making technical alterations



COBRA RYD 850



COBRA RYD 850
(With Extension Bucket)



COBRA RYD 850 SKID STEER LOADER ATTACHMENTS



Fork Lift



Cold Planer



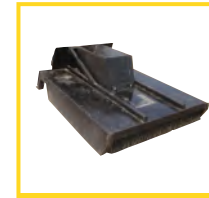
Ditch Bucket



6 in 1 Bucket



Vaccum Sweeper



Grass Mover



Concrete Mixer



Sweeper



Breaker



Stump Grinder



PD Vibratory



Vibratory Roller



Mulcher



Tree Cutter



Concrete Bucket



**Bucket with
Hydraulic Grab**



Grapple



Lifting Hook



Rock Bucket



COBRA EQUIPMENTS

Division of STG infrastructure Private Limited (Construction Equipments)
Room/Office No. 171 / A2T, Floor 1, Building 1,
St. 2nd Karacharovskaya, 1, Moscow.
Tel.: +7-926-589-15-48 | +7-985-238-36-68
Email: sales@cobraequipments.com
Website: www.cobraequipments.com